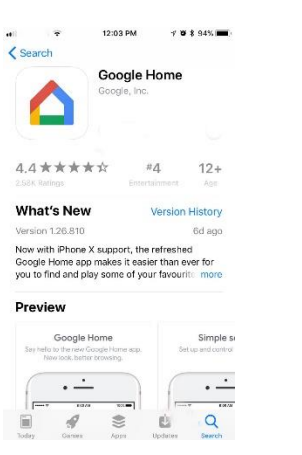



Tuya Smart App - Google Home Setup

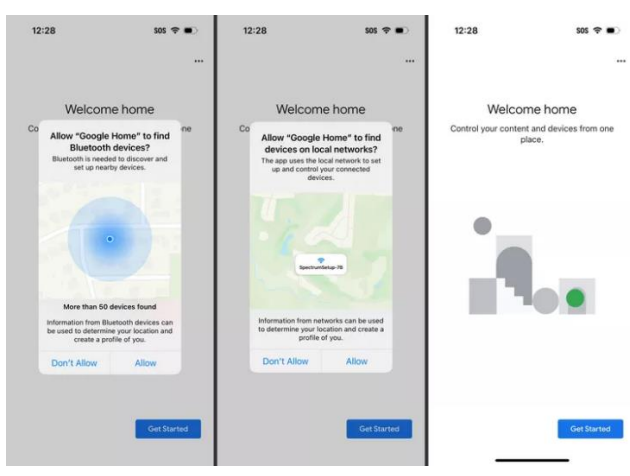
Pre-requisites

- Google Nest (any model)
- A smartphone (Android or IOS)
- Stable internet connection
- Tuya Smart app with at least one configured device
- Google Home app
- An active Google Account

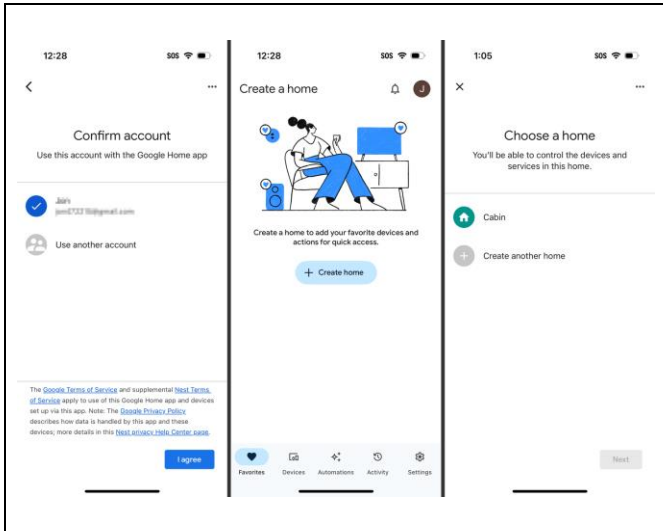
1) Install the Google Home App

	<ol style="list-style-type: none">1) Open the Google Play Store (Android) or App Store (iOS).2) Search for 'Google Home' and tap Install. 
--	--

2) Open Google Home and Sign-In

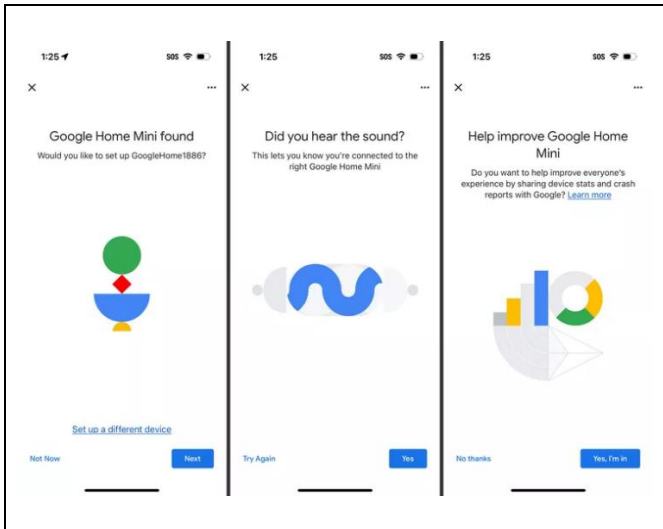
	<ol style="list-style-type: none">1) Launch the Google Home app.2) Sign-in using your Google Account credentials.
---	---

3) Set Up a Home



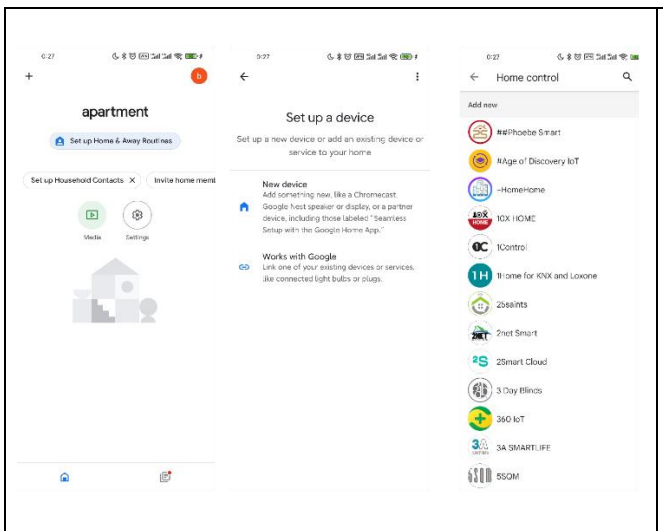
- 1) Tap Get Started then **Create a Home**.
- 2) Follow the on-screen instructions to name your home and set your location

4) Add a Speaker



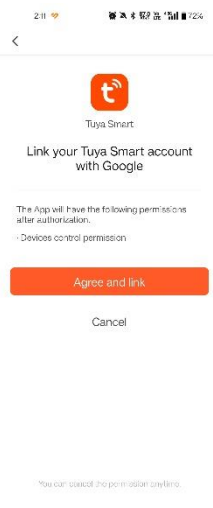
- 1) The app will search for Google Home device. When it's found, choose **Next**.
- 2) Follow the instructions to finish adding new speaker device.

5) Link Tuya Smart App

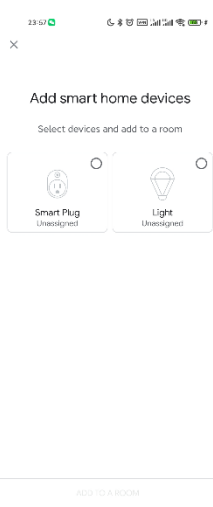


- 1) From the main screen, tap the **+** button at the top-left corner.
- 2) Select '**Set up device**' then '**Works with Google**'.
- 3) In the Works with Google screen, tap the search bar and type '**Tuya**'.
- 4) Select **Tuya Smart** from the list of available services.


6) Sign-In to Tuya

	<ol style="list-style-type: none">1) You will be redirected to a Tuya login page.2) Enter your Tuya account credentials (email or phone and password).3) Grant permission to link accounts by tapping Agree and Link.
---	---

7) Assign Devices to Rooms

	<ol style="list-style-type: none">1) After linking, your Tuya devices will appear in the Google Home app.2) Assign each device to a specific room for organized control.
--	---

8) Control Tuya Devices with Google Nest

	<p>You can now control your Tuya devices using voice commands through Google Nest. Examples:</p> <ul style="list-style-type: none">- Hey Google, turn on Stand Lamp.- Hey Google, turn on Smart Plug.- Hey Google, check my door sensor status.
---	---